

# EnerGo 1+

## Portable Home Energy Storage

(1kWh x 5)



Color options available

 Sky White  Flowing Silver  Dawn Gold  Space Gray



### All-in-One 3S Integration Tech, Super Hybrid Charging

Features an industry-first integrated BMS/EMS/PCS system, enabling solar+grid hybrid charging. Delivers up to 1500W input, 50% faster efficiency—ending power anxiety.



### 5-Min DIY Setup, Plug-and-Play, Zero Drilling

Revolutionary all-in-one design. No electrician needed. Just connect 3 cables in 5 minutes. No wall drilling. True appliance-style installation.



### Smart Off-Grid Management, Precise & Efficient

Built-in AI and IoT tech optimizes energy use even without the Internet, ensuring 24/7 stable and efficient performance.



### Flexible Scalability, Adapts to Every Home

Expand capacity smoothly from 1-5kWh. Steady AC output powers everything from small devices to high-power appliances.



Balcony PV



Courtyard



Garage

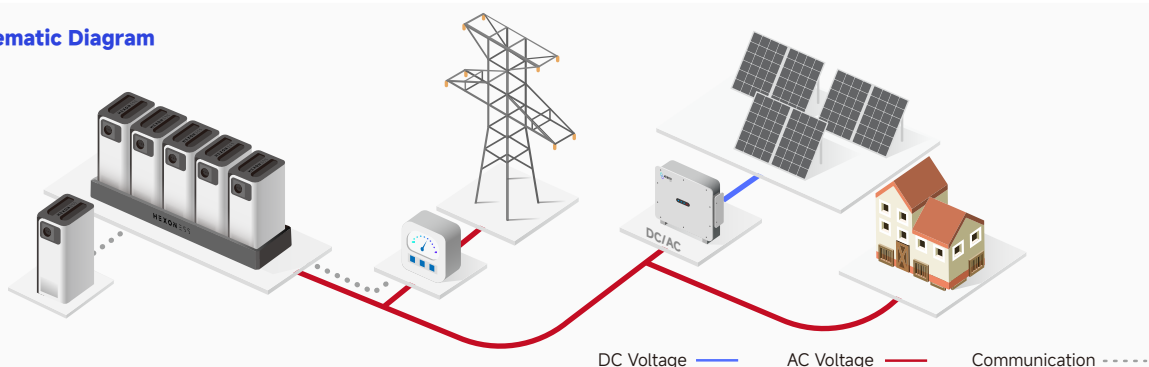


Temporary Buildings



Outdoor Activities

### System Schematic Diagram



## Model

### EnerGo 1+



### EnerGo 1+ HOUSES



#### DC side parameters

Battery capacity	1004.8Wh	Hold EnerGo1 + *5
Battery cell type	LFP 314Ah	/
Battery voltage range	2.5~3.65V	/

#### AC side parameters

AC max power	300W	300W*5
Total current waveform distortion rate	≤5% (at rated power)	
Rated grid voltage	23 0V	
Grid voltage deviation	-7%~+10%	
AC overload capacity	1.1 times 10 seconds	
AC wiring method	L +N+PE	
Rated grid frequency	50Hz±2.5Hz	
Power Factor	0.90~1	
AC protection	AC lightning protection	

#### System parameters

Maximum system efficiency	85%	
Photovoltaic input voltage	DC16~38V 200W (max)	/
USB & Type-C	DC5V 2.1A	/
Battery cell cooling method	Air cooling	/
Remote Monitoring	APP	/
Noise	≤ 75dB@1m	≤20dB@1m
Communication methods	Bluetooth / WIFI	/
Interaction	/	voice
Installation location	Outdoor /Indoor	Indoor
Operating temperature range	Charging: 0~40°C; Discharging: -20~40°C	-20~40°C
Maximum operating altitude	3000m	
Operating humidity range	5%~95%RH, no condensation	
Protection level	IP20	
Product dimensions (W*D*H)	145(W)x220(D)x310(H)mm	856(W)x260(D)x75.5(H)mm
Weight	9.5kg	5.5kg
Product Certification	UN38.3, IEC62619, IEC62368, IEC62040, CE-RED, EN18031, EU2023/1543	IEC62368, IEC61000